

Welcome to the West Area Planning Committee

- This planning committee meeting is held in public, but it is not a public meeting.
- There will be opportunity for the public to address the committee on each application.
- If you wish to speak for or against a planning application, you will need to have either requested it in advance, or fill out and hand in one of the available speaker forms.
- Information on meeting protocol and conduct at committee is set out in the Code of Practice.
- You can find a copy of the Code of Practice in the committee agenda, just before the first planning application report.

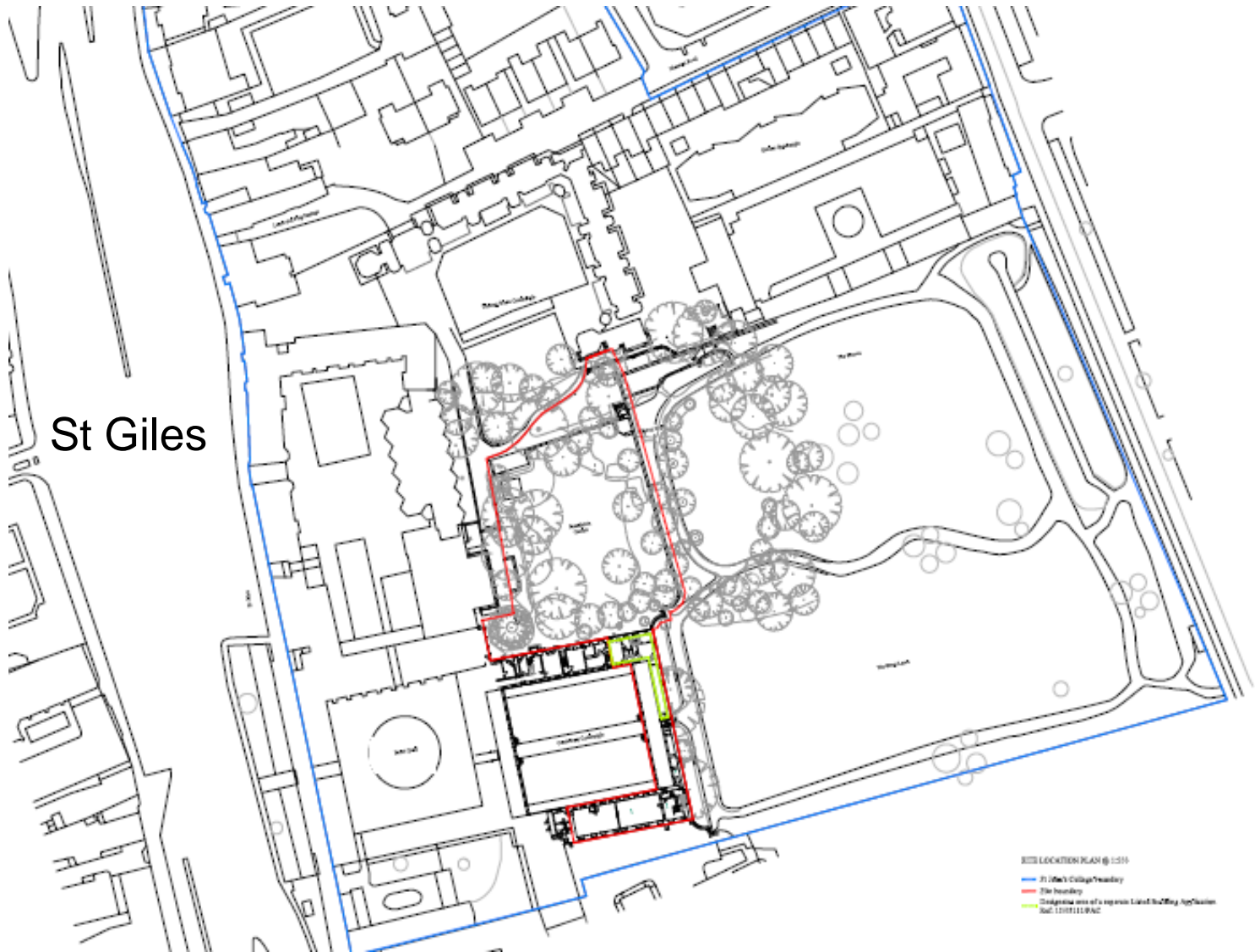
www.oxford.gov.uk



Site location plan:

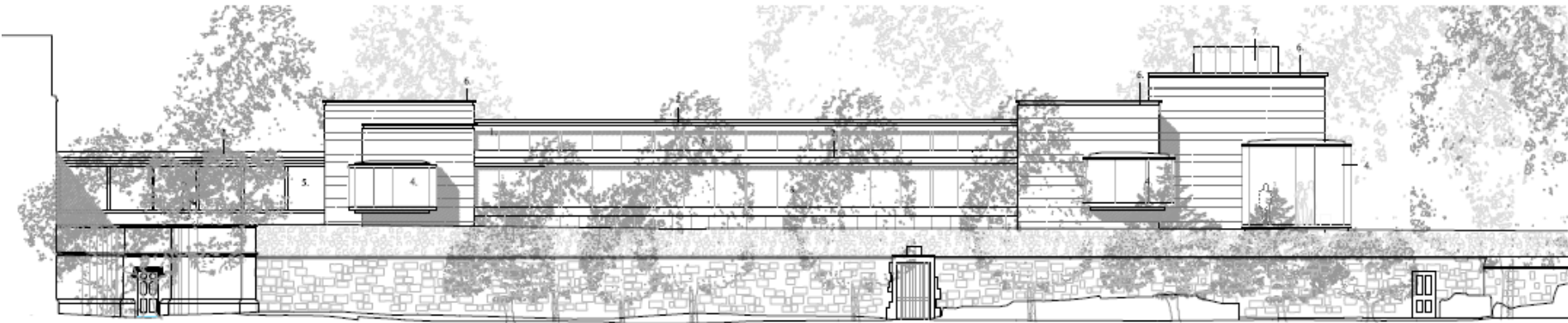
98

St Giles

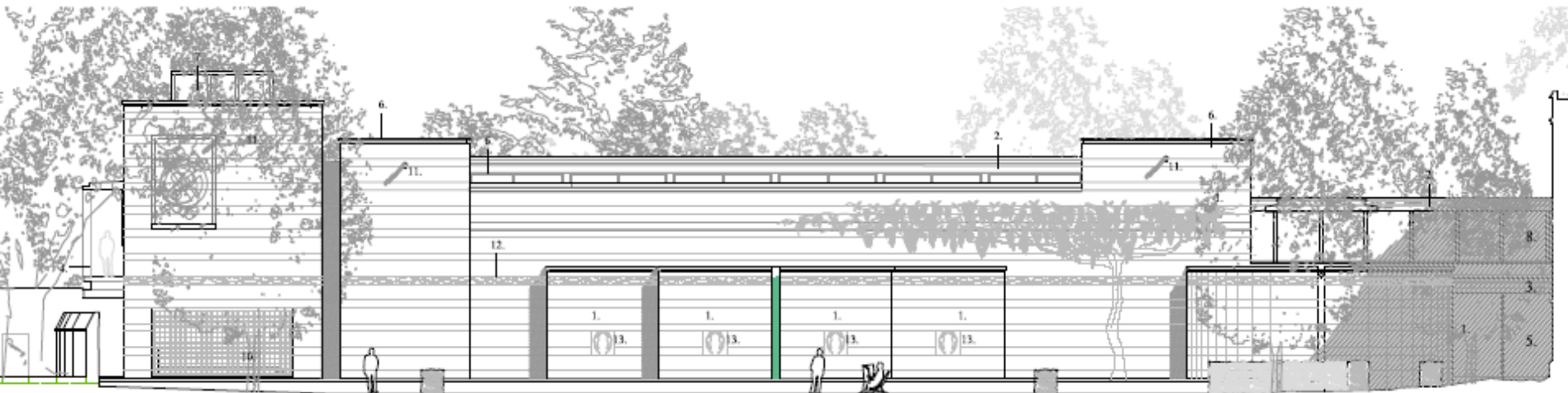


Site location plan @ 1:200
St Giles' College/Presbytery
Site boundary
Proposed site of a separate Land Building Application
Ref: 11/01111/WAC

Proposed Elevations:

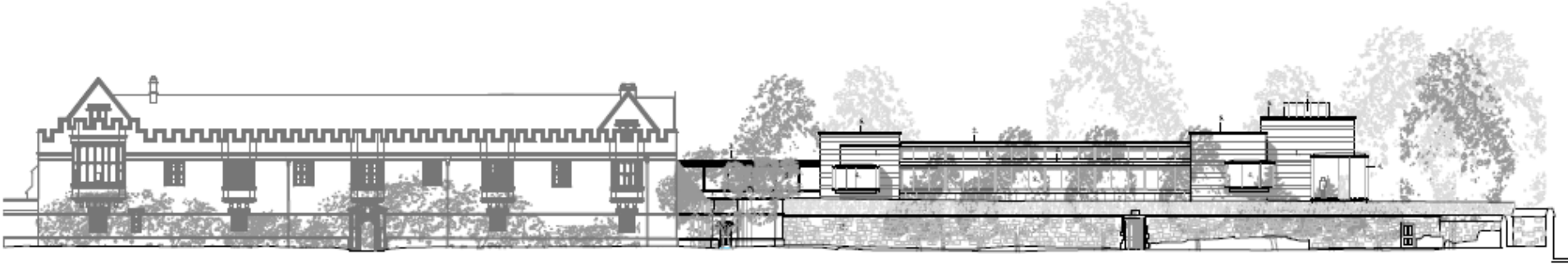


East Elevation (facing The Groves):

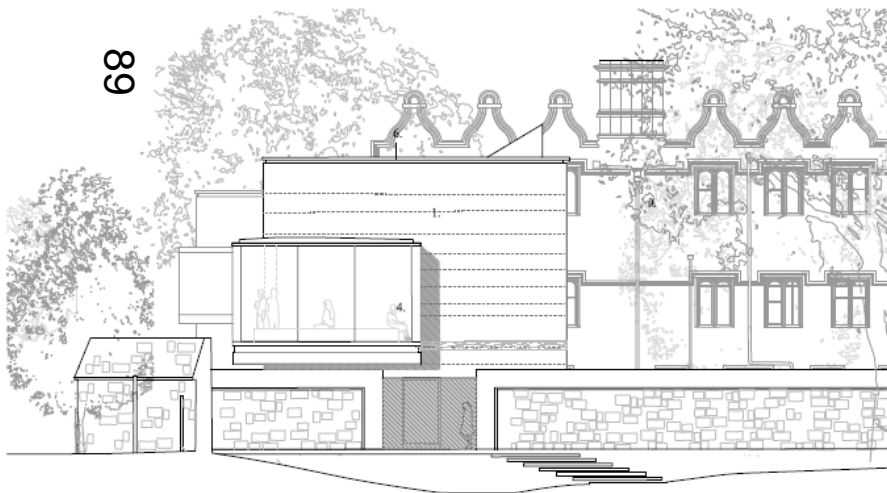


West Elevation (facing the President's Garden):

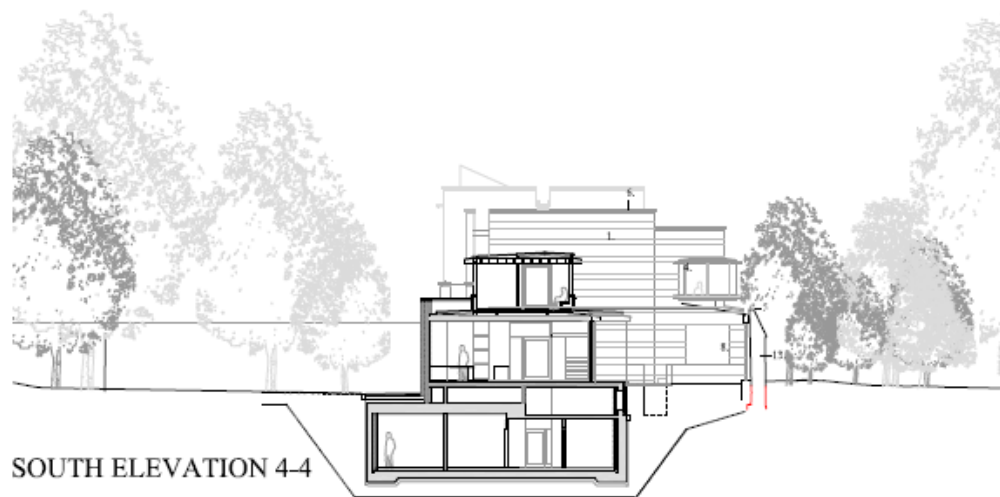
Link with the Laudian Library:



East Elevation (facing The Groves):



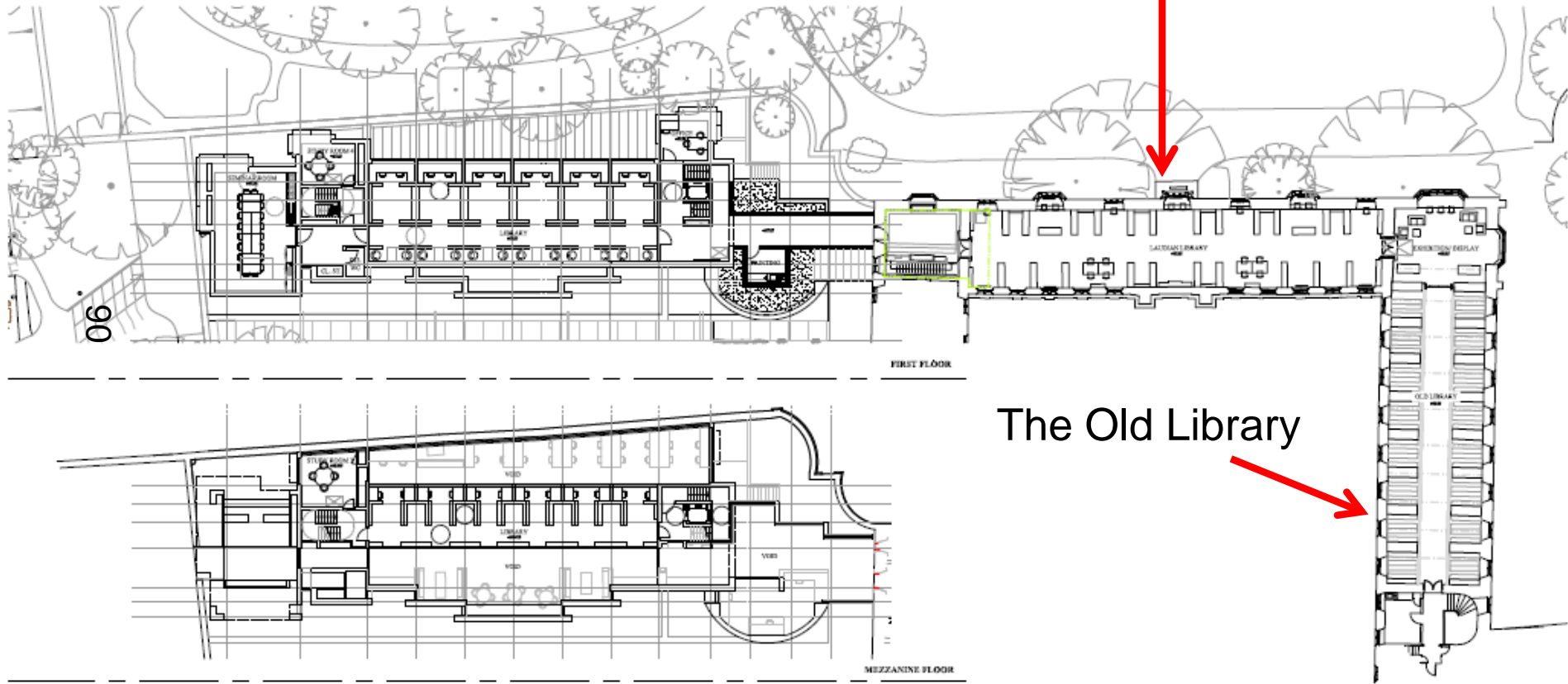
North Elevation (facing Thomas White Quad):



South Elevation (facing Canterbury Quad):

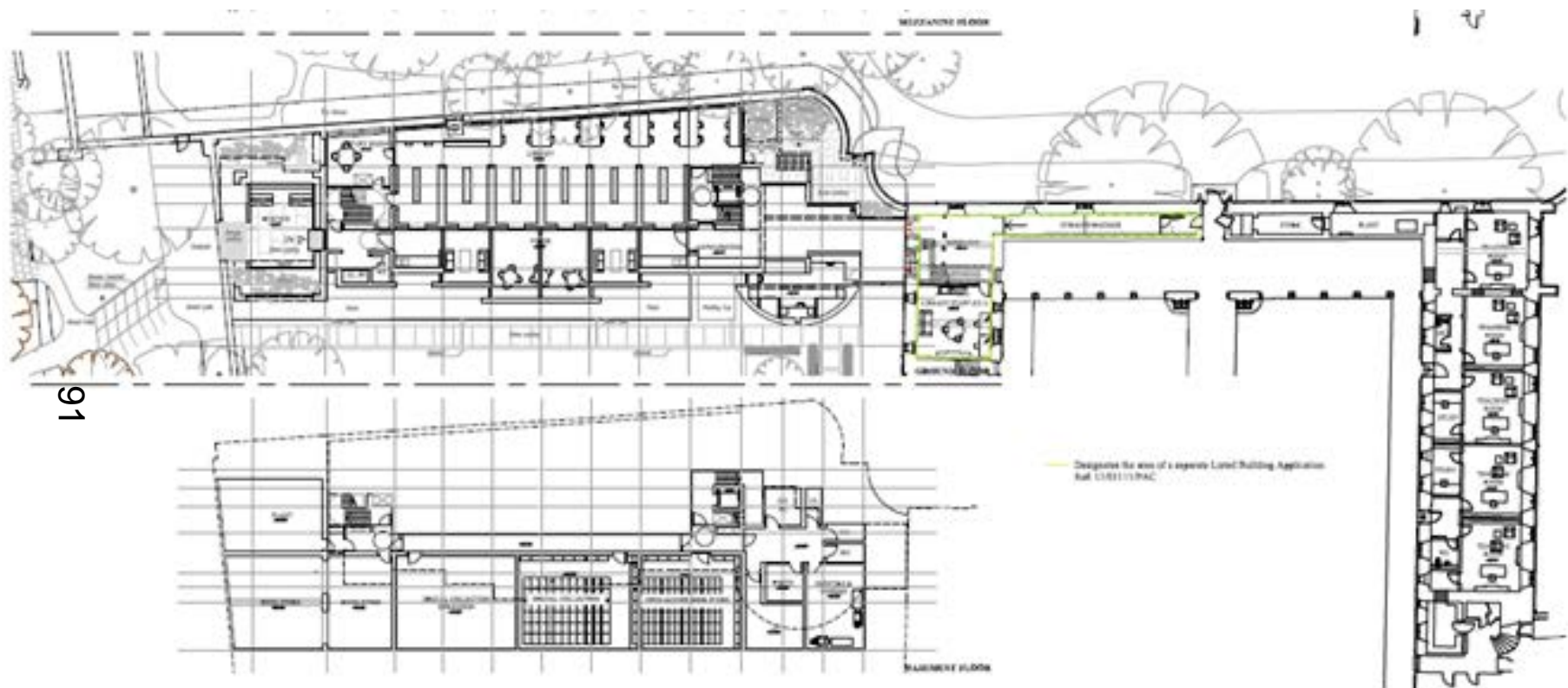
Proposed Library floor plans:

Laudian Library



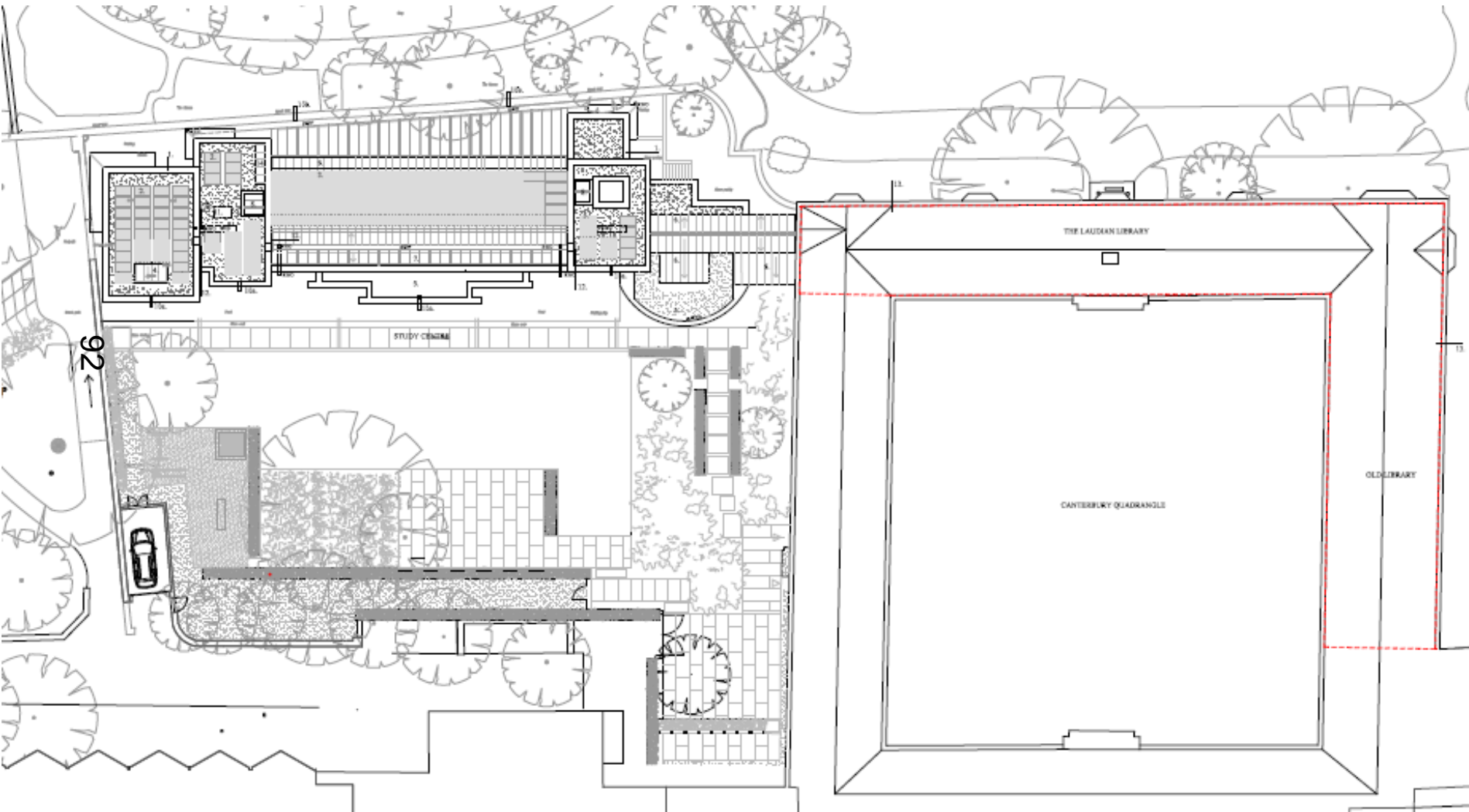
First Floor (above) and Mezzanine level

Proposed Library floor plans:



Basement and ground floor level

Proposed roof plans:





93

View of the East Quad and Otranto Passage

Site of new building



94

View of the Canterbury Quad from The Great Lawn looking north west



95

View of the Canterbury Quad from the President's Garden looking south



The Laudian Library interior



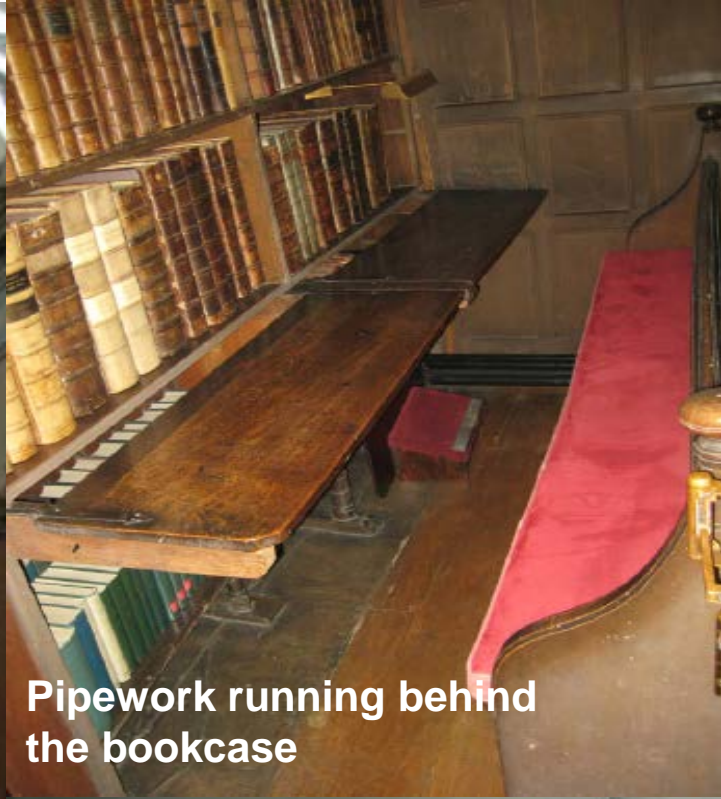
Limited desk space





The Old Library interior

97



Pipework running behind the bookcase



Rooms under the Old Library prior to conversion

Visualisations of the proposed library:

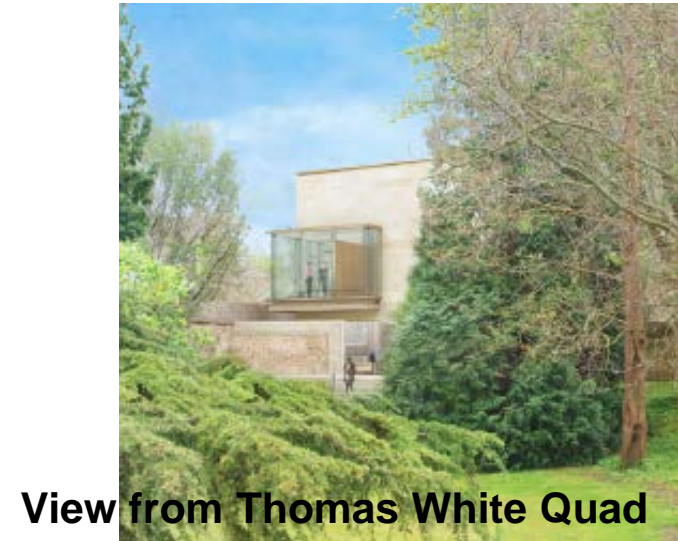


98

View from The Groves in winter



View from The Groves in summer



View from Thomas White Quad